



2024 SUMMER ENRICHMENT PROGRAM

For Hillsborough students entering grades 1-8 in the Fall '24
Located at the Hillsborough Middle School

Week 1: July 8 – 12
Week 2: July 15 – 19

Course Preview is 3/8-3/10

Course Registration is 3/11 – 3/28

AM Session: 9:00 am – 12:00 pm

PM Add-On Clubs: 12:00 pm – 2:30 pm

Your child must be enrolled in an AM Session
to be eligible for PM Add-On Club enrollment.

QUESTIONS? EMAIL US AT SUMMERENRICHMENT@HTTPS.US

Summer Enrichment Info



DATES	Week 1: July 8 – 12 Week 2: July 15 – 19
LOCATION	Hillsborough Middle School
TIMES	AM Session Courses: 9:00 am – 12:00 pm PM Afternoon Add-On Clubs: 12:00 pm – 2:30 pm

AM Morning program courses cost \$140 each per week (Monday through Friday)
PM Afternoon program cost is \$130 per week (Monday through Friday)

In order to participate in Afternoon Add-On Clubs, students must also be signed up for a Morning Course

Go to "Documents" section on Parent Portal for Login Information and Registration
(See "Summer Enrichment in 6 Easy Steps" for more info!)

Transportation is not provided.

Any medications may be dropped off at the nurse's office on the first day of camp.

Choose One Payment Option:

Pay via Check

Send check to your child's school via backpack or to:

**SUMMER ENRICHMENT
TRIANGLE SCHOOL
156 S. TRIANGLE ROAD
HILLSBOROUGH, NJ 08844**

Checks Made Payable to
Hillsborough Township Board of Education

OR

Pay Online via PaySchools

See district website for
PaySchools directions
(4% fee)

*PAYSCHOOLS FEES WILL NOT
APPEAR ON GENESIS UNTIL WEEK
OF APRIL 8TH

TO AVOID UNENROLLMENT, ALL PAYMENTS ARE DUE MAY 3, 2024

At the time of registration, families must complete the
REQUIRED Emergency Medical Form
(One form per student, please!)

Sign up at: summerenrichment.https.us

Summer Enrichment in 6 Easy Steps!

1

Click the Summer Enrichment Letter on the Parent Portal on Genesis

2

Find your child's Username ID and Password

3

Login to the Summer Enrichment Website:
<https://www.summerenrichment.https.us>

4

View the AM Courses and register for Week 1, Week 2, or both weeks

5

If interested, add PM Add-On Clubs listed at top of Course list for Week 1, Week 2 or both weeks.

6

Click the Checkout Page to Choose your payment method AND complete the REQUIRED Emergency Contact Form.

Summer Enrichment FAQ

Courses have limited enrollment and fill quickly.
Registration is based on a first come, first served basis.

Refunds

No refunds will be issued after June 30th, unless medical or family emergency and on a case by case basis.

Security

The building is locked at all times with the exception of 10 minutes prior to drop off and pickup times.

Snack

Students should bring a snack each day during the AM program, and lunch if they are attending the PM program.
Please follow the district policy regarding allergens.

Transportation

There is **no** transportation provided.
We encourage carpooling!

Sign Out

Please sign out your child at the end of each day. If someone else will be picking up your child please let either the front office or teacher know.

We take attendance each day so if your child will be absent for any reason please email bgolden@https.us



Please reach out to bgolden@https.us with any other questions!

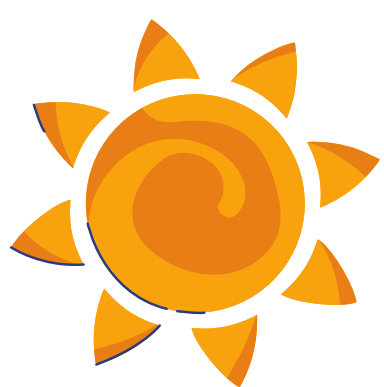
2024 Morning Session Courses

\$140 per week

More information, including grade levels, for each course will be posted on our website:

summerenrichment.https.us

- Adventures in Science and Creativity
- Amazing Animals
- Awesome Acting and Dynamic Dancing
- Beginning Builders Club
- Caking and Decorating, Without the Baking!
- Calming Creations
- Card Tricks and Games
- Crafty Creators
- Beautiful Bugs and Interesting Insects
- Creative Writing
- Crochet Away
- Don't Let the Pigeon Go to Summer Enrichment
- Energize and Socialize
- Fabulous Fibers
- Game Strategies
- Give It a Beat
- Indoor/Outdoor Sports Games
- Jewelry in July
- Junior Painters
- Movers and Painters
- Multi Sport and Games
- Pizza Party!
- Polymer Clay Characters
- Say Cheese!
- Science Adventures!
- Sculpture! Sculpture!
- Senior Painters
- Slime Camp
- Sports Plus
- Summer Through the Eras: A Taylor Swift Experience
- Think Like a CODER
- Wizarding World of Harry Potter!



Our teachers have designed courses for your children that are aligned with NJ standards, promote critical thinking and problem solving skills and are fun and creative!

2024 Afternoon Add-On Clubs

\$130 per week

Students MUST be signed up for a Morning Course to participate in Afternoon Add-On Clubs.

Add On Clubs are an extension of the Summer Enrichment Program. Students will be assigned an afternoon club based on their grade level.

We've designed the week to include both Literacy Activities and Math Activities.

Club activities include literature circles, investigations, math skills and games, and more!

Students have a supervised lunch period from 12:00–12:30 (Bring Your Own) and club sessions run from 12:30–2:30.

Parents must pick up their children promptly at 2:30 as there is no transportation.



If your child does not attend Hillsborough Schools but lives in town, please email us for login information at summerenrichment@https.us